

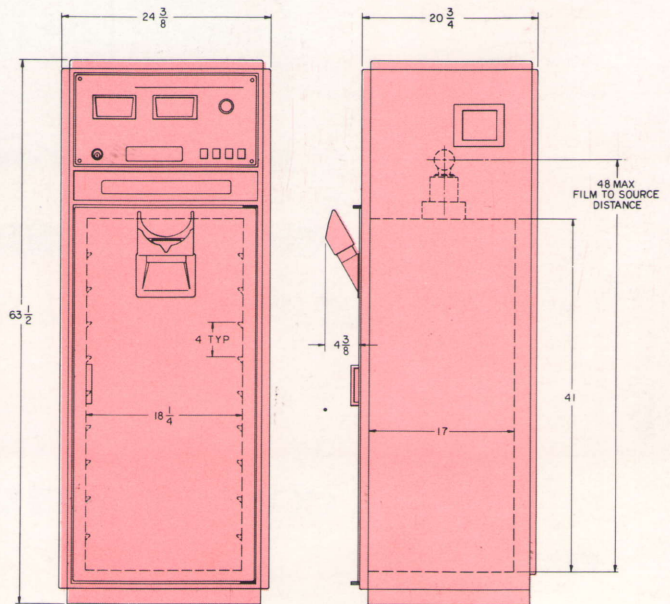
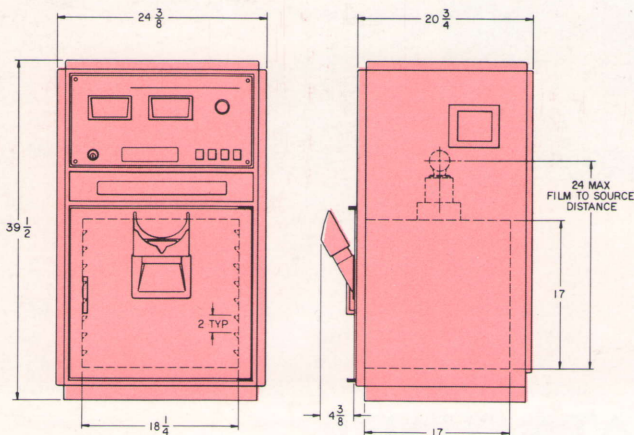
SPECIFICATIONS

	TORREX 120	TORREX 150
Standard Line Voltage Requirements*	117.0 VAC – 50 or 60 Hz	117.0 VAC – 50 or 60 Hz
Power Requirements	625 VA, Maximum 0-120	850 VA, Maximum 0-150
Output Rating, Kilovolts (By Variac Control)	0-120	0-150
Tube Current Rating (By Push-Button Control)	3.0 or 5.0 Milliampères	3.0 or 5.0 Milliampères
X-Ray Tube Model	TX-120	TX-150
Focal Spot Size	.5 mm ± .2 mm	1.2 mm ± .3mm
Film to Source Distance	24" or 48"	24" or 48"
Cooling	Forced Oil	Forced Oil
Duty Cycle	100%	100%
Beam Half Angle	15°	15°
Inherent Filtration	.015 Beryllium Window	.015 Beryllium Window
Timer Range	10 Seconds to 4.5 Minutes	10 Seconds to 4.5 Minutes
Cassette Capacity	Up to 14" x 17"	Up to 14" x 17"
Weight – Maximum – 24" Model	450 Pounds	500 Pounds
Weight – Maximum – 48" Model	800 Pounds	800 Pounds

* 230 VAC – 50 Hz – For foreign use available

24 INCH MODEL

48 INCH MODEL



NOTE: THE 24" AND 48" MACHINES ARE AVAILABLE IN 120 OR 150 KILOVOLTS



SUBSIDIARY OF XONICS, INC.
 6837 HAYVENHURST AVENUE, VAN NUYS, CA. 91406
 PHONE: (213) 787-7420 – TELEX: 910-495-1725

THE TORREX SYSTEMS ARE DISTRIBUTED BY: